

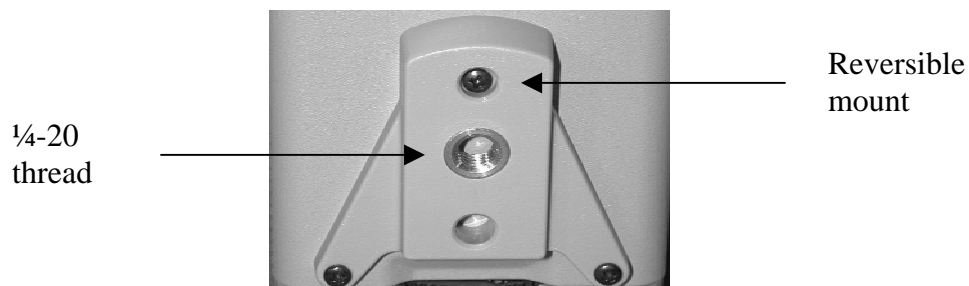
## Common Camera Types

### Full Body Camera

This is by far the most popular and common camera style. They are typically sold as camera only. Because the lens and mount are sold separately, this style is the most flexible.



This style typically uses an industry standard 1/4-20 thread screw for attaching to the mount. This bolt thread is available at most hardware stores, so it always a good idea to carry extra bolts of varying lengths. Many models have dual mounting holes (top and bottom) to allow mounting from both sides of the camera, or a reversible mount bracket that can be moved.



## Bullet Camera

Bullet cameras are small, typically round cameras. This style of camera typically has a factory-installed lens.



Unlike full body cameras, there is not an industry standard lens mounting for this style of camera. Lenses can often be changed in the field, but standard off the shelf lenses typically will not work. To insure compatibility, the lens should be purchased from the camera supplier, or even better, changed before the camera is shipped.

Power and video connections are usually on a lead. As mentioned previously, beware of cutting off the power lead to make the power connection. Using the appropriate connector is preferred, and helps maintain warranty coverage. Bullets are also typically shipped with a mount. The mount is usually light duty and not suitable for an application where the camera can be tampered with.

## Dome Camera

Dome type cameras are housed in a clear or tinted dome. The dome allows for discrete surveillance. Lenses for this type of camera are typically factory installed, and usually not industry standard. Dome style cameras are designed for ceiling mounting, but some vendors offer wall mount adapters.



## Board Camera

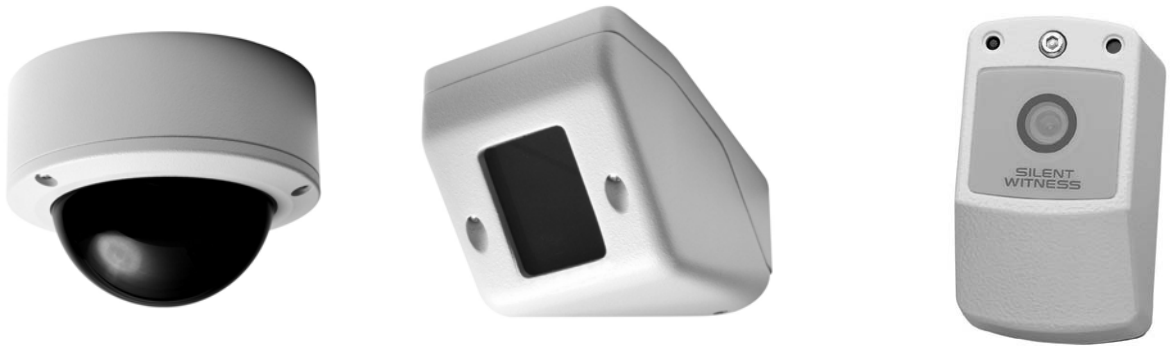
Board camera is a camera without the traditional housing. They are small and easily concealable. The lens is typically factory installed and non-standard (some vendors offer board cameras with standard lens mounts). Board-type cameras are typically used in dome cameras, vandal resistant, and covert cameras.



Board cameras come as circuit boards only, or housed in protective plastic or metal housings. When dealing with circuit boards, care must be taken not to damage the board and static discharge must be avoided.

### Vandal Resistant

Vandal resistant cameras are housed in “vandal resistant” housings. There are many variations of this camera style. Lenses are typically factory installed and non-standard.



Vandal resistant cameras are made vandal resistant by the housing materials. The domes feature thick polycarbonate lower domes and heavy metal upper bodies. The wedge may be high impact plastic or metal, and be tapered so they are difficult to grip. The box camera may be in a heavy steel case.

## Covert

Covert cameras are built in other objects to hide or disguise them. The devices they are built into can functional or non-functional.



Exercise caution when purchasing and installing covert cameras. Check with your legal counsel prior to installing a covert camera system. There may be legal issues, which are better considered prior to installation. Legal issues considered after a problem occurs tend to be much more costly. Non-functional devices (especially life safety devices such as smoke detectors) are illegal in some parts of the country.

## Variations

There are many variations on the basic cameras types discussed. Camera manufacturers are dreaming up new concepts all the time. Full body cameras with built in varifocal lenses, bullet cameras with built in illumination, and covert cameras with built in digital recording devices are just a few recent variations.

This document is part of a complete book entitled:  
**CCTV System Design & Installation**

By Charles Aulner and Bryan McLane

COPYRIGHT © 2005 Charles Aulner and National Training Center, Inc.

Used by permission of the Author

To order the complete copy of this and other books, visit  
[www.NationalTrainingCenter.net](http://www.NationalTrainingCenter.net)

National Training Center provides the very best in training resources to the Security professional. These resources include:

- Training manuals and references
- Live classroom training
- Online classroom training (instructor led)
- Online training (self-paced)

We support and encourage NICET Certification



[NationalTrainingCenter.net](http://NationalTrainingCenter.net)

The Very Best in  
Training and Books

(702) 648-8899